

McAfee Global Solutions Lab

Access in seconds to the latest McAfee Solutions in real environments

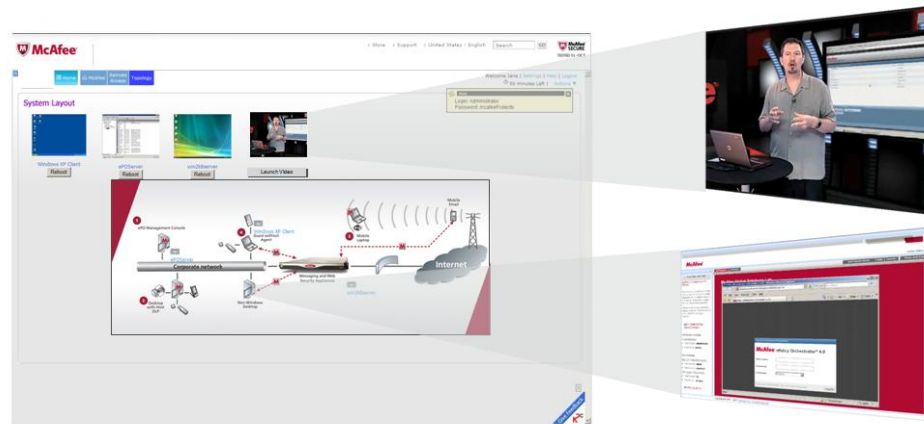
In a constantly evolving threat environment it can be challenging to stay abreast of the latest security technologies and understand the benefits of increased protection and ease of management. The Global Solutions Lab (GSL) provides free, online access, to real end-to-end security solutions that enable you to evaluate the protection and ease of management of the latest security technologies without having to invest your own resources.

Key Points

Free on demand access

The McAfee Global Solutions Lab provides multiple benefits to our customers.

- Evaluation of new technologies
- Configuration testing
- Installation best practices.
- Upgrade best practices.



Video Walkthroughs

Virtual environments on demand

Virtual Environments on Demand

Quickly and easily see McAfee's latest technologies in action through on demand access to real environments from your desk via your web browser.

Environments provide real world configurations with attack simulation files to show detection, centralized reporting and remediation, safely within its own self contained environment.

Not only does the Global Solutions Lab provide evaluation environments, but also environments for upgrading products and the installation of a new technology, all free of charge.

Video walkthroughs

To help you get the most from the Global Solutions Lab each environment contains video walkthroughs and best practice guides helping you realize the full benefit of that McAfee solution.

These short videos and guides provide an easy way to see the capability of McAfee's security technologies and how to deploy them in your environment.

1. Getting Access

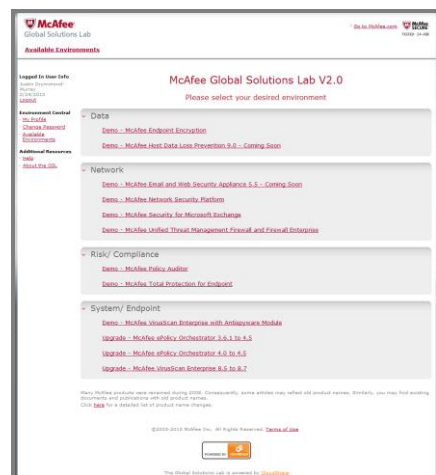
The Global Solutions Lab is free and easily accessed from the McAfee support website or visiting www.mcafee.com/gsl. Click new user and create an account.



Once registered you are emailed your authentication details enabling you to access the Global Solutions Lab any time you require.

2. Select your environment

Once authenticated a list of available environments are displayed. Simply click on the environment you require.

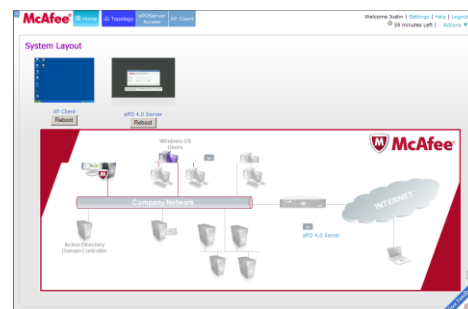


3. Environment overview

Each environment contains an overview of the solution selected including product documentation and video walkthroughs.

4. Environments on demand

Launching the environment will create a new window containing an interactive topology map of the selected environment.



Most environments are pre-staged providing instantaneous access to the virtual machines (Browser Plug-in installation required). In some cases it may take a minute or two for the environment to load

Users have full control of the remote environment allowing the full client / server abilities of McAfee products to be reviewed.

The latest technologies

McAfee is constantly updating the Global Solutions Lab with the goal to have the latest McAfee technologies / products available as quickly as possible.

If you have feedback on the Global Solutions Lab or request for a specific technology please contact us at gsl_help@mcafee.com

The McAfee Global Solutions Lab cannot commit to addressing specific requested configurations but aims to provide environments that help all users receive the benefits of McAfee products.

Specifications

Supported Web Browsers

- Internet Explorer version 7.0 or greater,
- FireFox 3.0 or greater
- Google Chrome
- Other browsers are unsupported and may prevent access to the Global Solutions Lab environments.

Operating Systems Supported

- Windows XP (and above)
- Windows 2000 (and above)
- Mac OS users are recommended to install the Microsoft RDP client for Mac OS.

Browser Configuration

- For IE, an ActiveX control is required to allow viewing of the remote environments.
- Firefox, a plug-in will be downloaded
- Chrome, an extension will be installed

Firewall Settings

The McAfee Global Solutions Lab utilizes Remote Desktop Protocol (RDP) on port 443. A desktop firewall or network firewall restricting this outbound traffic will prevent a connection to the remote desktops.

Performance

The Global Solutions Lab utilizes Remote Desktop Protocol that requires a reasonably fast internet connection. Users with lower bandwidth connections can reduce the screen resolution of the virtual machines to improve performance.



McAfee, Inc.
3965 Freedom Circle
Santa Clara, CA 95054
888 847 8766
www.mcafee.com